

We pioneer motion

ENERGIZING TRANSPORTATION

With our holistic know-how, innovative technologies and production-ready components

Climate protection, urbanization, driver shortage: the transportation sector will have to completely reinvent itself in the next few years – both in **urban areas** and on **long-haul transport**. **Efficiency, sustainability, and safety** are key. Here's where Schaeffler comes in – with innovations for tomorrow's freight traffic.

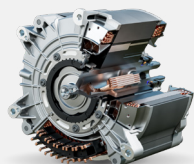
TRANSPORTATION REINVENTED

Whether it's the **electrification of the powertrain**, the **reduction of emissions**, or **automated driving** – we help commercial vehicle manufacturers become more sustainable, improve logistics, and create innovations for tomorrow's commercial transportation, all improving drivers' experiences.

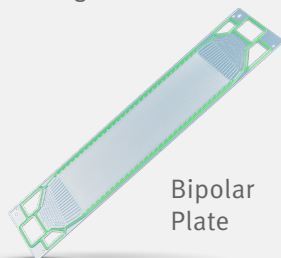


ELECTRIFYING COMMERCIAL VEHICLES

Get on the road to sustainable logistics.



E-Motors



Bipolar Plate

Thermal Management Single Smart Valve



Power Electronics



REDUCING EMISSIONS

Less environmental impact by saving energy, fuel and CO₂.

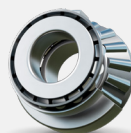


Variable Valvetrain

Tire Pressure Regulation System



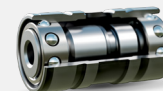
Bearing innovations



Pinion Bearing



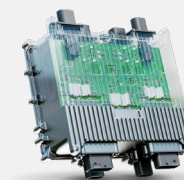
TriFinity™ Wheel Bearing



Turbo Ball Bearing Cartridge

AUTONOMOUS DRIVING AND DIGITALIZATION

Drive the future – today.



Space Drive

Intelligent Truck Wheel Bearing

