

We pioneer motion

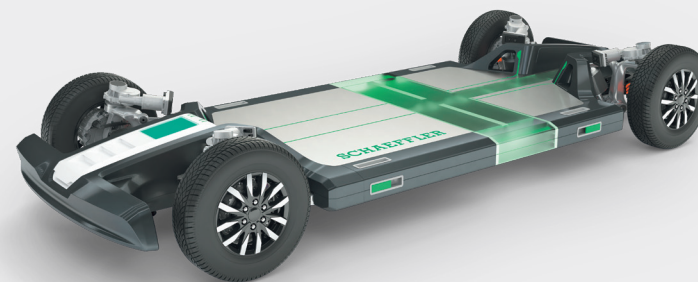
# A CONSTRUCTION KIT FOR NEW MOBILITY

One platform for all driving functions.

With the innovative **Rolling Chassis concept**, Schaeffler presents a **scalable and flexible** platform for the city of the future. The **modular system** can be used **universally** in passenger, logistics, and service applications. **Autonomous and fully networked**, it contributes to modern mobility concepts. Platforms for different vehicle classes can be designed in an application-optimized way with the scalable **iCorner Module**.

## ONE CHASSIS FOR ALL APPLICATIONS

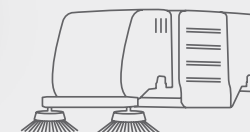
The **platform** offers **scalability** with regard to length and width, **variable battery capacity** and can be combined with **bodies for different applications**. An automated **conductive charging system** enables unattended vehicle charging.



Passenger transportation



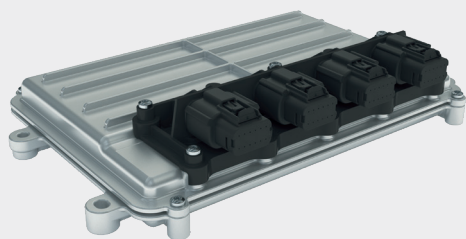
Cargo transportation



Service applications

## CENTRAL INTERFACE

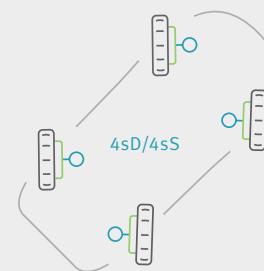
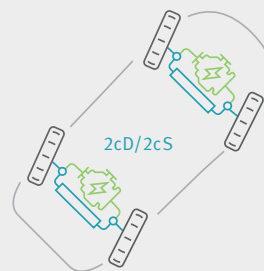
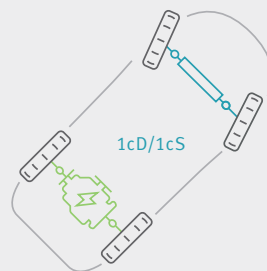
The **Schaeffler chassis control unit (CCU)** transforms trajectory demands into **ASIL-D conform control signals** for propulsion, steering and braking.



Safe software guarantees data integrity. Redundancies ensure availability.

## FLEXIBLE VEHICLE TOPOLOGY

By combining **Schaeffler's drive and steering systems** in different ways, the wide range of customer requirements in terms of **maneuverability and performance** can be met.



S: Steering, D: Driving, c: central, s: single

— Propulsion — Steering

## SCHAEFFLER iCORNER MODULE

Steering, driving, braking and wheel suspension in the **smallest possible envelope**: Schaeffler's **intelligent vehicle dynamics control** paired with a steering angle of up to 90 ° enables **maximum maneuverability**.

