



## Covering Strip ADE

Mounting manual



# Covering strip ADE

## About the mounting manual

This manual applies to the covering strip ADE. Covering strip must only be fitted in accordance with the manual.

### Symbols

The warning and hazard symbols are defined in accordance with ANSI Z535.6-2006.



In case of non-compliance, minor or slight injury will occur. <

### NOTICE

In case of non-compliance, damage or malfunctions in the product or the adjacent construction will occur. <

## Fitting area, fitting tools

The following ancillary equipment is required to fit covering strip ADE in the guideway:

- mounting set MSATZ.ADE (retaining ring and retaining screw)
- Allen key
- lint-free cloth.

### NOTICE

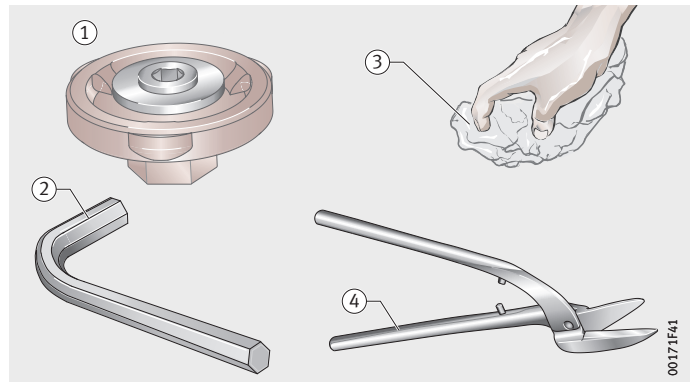
Machines, devices or equipment that generate cutting debris or dust must not be used in the vicinity of the fitting area.

Elements should only be fitted using the tools specified and in a clean condition.

Contamination, moisture and unsuitable tools will impair the function of the elements considerably and lead to an ongoing reduction in their operating life. <

- ① MSATZ.ADE
- ② Allen key
- ③ Lint-free cloth
- ④ Snips

*Figure 1*  
Ancillary equipment



# Covering strip ADE

## Checking the delivered condition

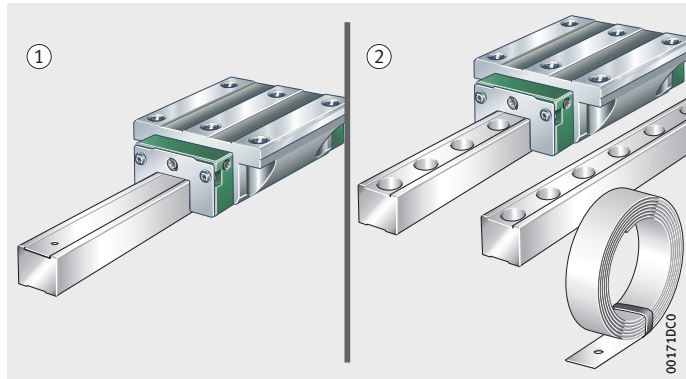
Do not remove the units from their packaging until immediately before fitting.

The fitting sequence is determined by the delivered condition:

- single-piece guideway:
  - covering strip is delivered inserted in the guideway
- multi-piece guideway:
  - covering strip is delivered in the packaging, together with the guideway, in the form of a coil.

- ① Single-piece guideway
- ② Multi-piece guideway

*Figure 2*  
Delivered condition



## Seals on the carriages

The carriages are fitted with the appropriate sealing system for covering strip ADE.

### NOTICE

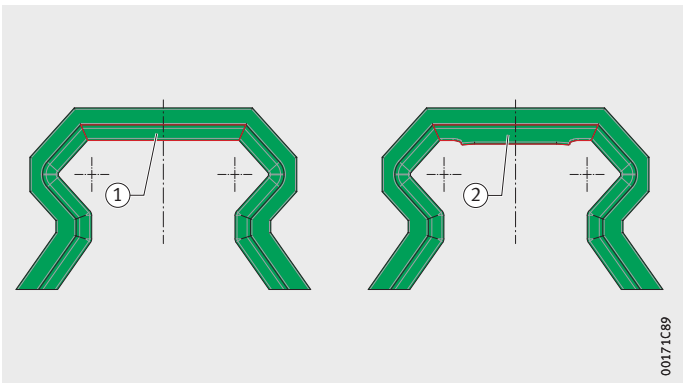
When replacing carriages or guideways (due to repair or crash), take into consideration that older carriages used in combination with covering strip ADE must be retrofitted with the corresponding end wipers featuring a stepped sealing lip. The required sealing elements KIT...OS for retrofitting to the carriages can be ordered from Schaeffler. <

For information on refitting the system KIT of sealing elements, see separate fitting manuals.

Example: Profile for RUE

- ① Previous profile
- ② Modified profile

Figure 3  
End wiper with modified, stepped sealing lip



Additional fitting manuals

Sealing KIT	Fitting manual	Download
KIT.RWU...-E (100 to 350)	MON 40	<a href="https://www.schaeffler.de/std/1F53">https://www.schaeffler.de/std/1F53</a>
KIT.RWU...-E(-H) (510 to 561)	MON 41	<a href="https://www.schaeffler.de/std/1F54">https://www.schaeffler.de/std/1F54</a>
KIT.KWVE...-B (100 to 370)	MON 45	<a href="https://www.schaeffler.de/std/1F55">https://www.schaeffler.de/std/1F55</a>
KIT.KWVE...-B (400, 430)	MON 46	<a href="https://www.schaeffler.de/std/1F56">https://www.schaeffler.de/std/1F56</a>

Further information

- KIT for seal retrofit by the customer:
  - example RUE: KIT.RWU...-E-A-OS
  - example KUSE: KIT.KWSE...-A-OS
  - example KUVE: KIT.KWVE...-B-OS
- for further KITs, see Catalogue PF 1, Monorail Guidance Systems.

# Covering strip ADE

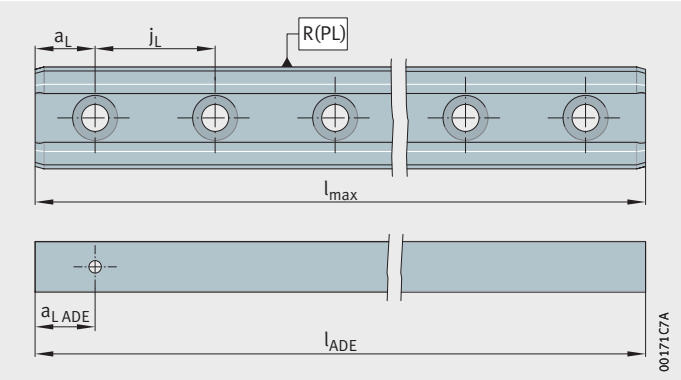
## Hole patterns of guideway and covering strip ADE

Hole patterns and designations of the guideway and covering strip ADE must be observed during fitting. Guideways that are suitable for covering strip ADE are marked with a laser.

$$l_{max} = l_{ADE}$$

$$a_L = a_{L\ ADE}$$

Figure 4  
Hole patterns of guideway and covering strip ADE



$a_L$	mm
Distance between start of guideway and nearest hole	
$j_L$	mm
Hole pitch	
$R(PL)$	–
Locating face	
$l_{max}$	mm
Length of single-piece or multi-piece guideway	
$a_{L\ ADE}$	mm
Position of fixing hole in covering strip	
$l_{ADE}$	mm
Length of customised covering strip.	

Mounting

Check the functional capability of MSATZ.ADE prior to fitting and replace with a new mounting set if necessary.

Should it be necessary to remove the carriage from the guideway:

- Observe separate fitting manuals for the mounting and dismounting of carriages.
- Leave the carriage on the dummy guideway in such cases, until it is used again.

Additional fitting manuals

Carriage	Fitting manual	Download
Linear recirculating roller bearing and guideway assembly RUE	MON 30	<a href="https://www.schaeffler.de/std/1F57">https://www.schaeffler.de/std/1F57</a>
Six-row linear recirculating ball bearing and guideway assembly KUSE	MON 22	<a href="https://www.schaeffler.de/std/1F58">https://www.schaeffler.de/std/1F58</a>
Four-row linear recirculating ball bearing and guideway assembly KUV E	MON 38	<a href="https://www.schaeffler.de/std/1F59">https://www.schaeffler.de/std/1F59</a>

Single-piece guideway

With the single-piece guideway, the covering strip ADE is delivered inserted in the guideway.

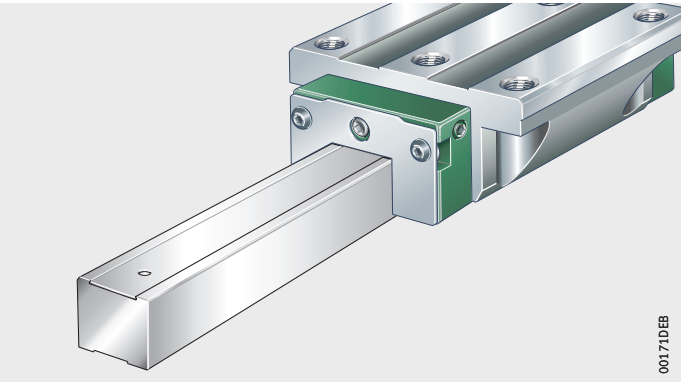


Figure 5  
Delivery of a single-piece guideway

NOTICE

If carriages are included in the scope of delivery, they will be located on the guideway in the delivered condition.

Carriages do not have to be removed from the guideway in order to fit the covering strip. ◀

- ▶ Carefully extract the covering strip from the guideway and keep protected against damage.  
Observe the additional guidelines on dismounting: page 9.
- ▶ Align and locate the guideways in accordance with separate fitting manual.
- ▷ Guideway is aligned.

## Covering strip ADE

### Fitting the covering strip

Slide the covering strip onto the guideway and fix in place in accordance with the following steps.

#### NOTICE

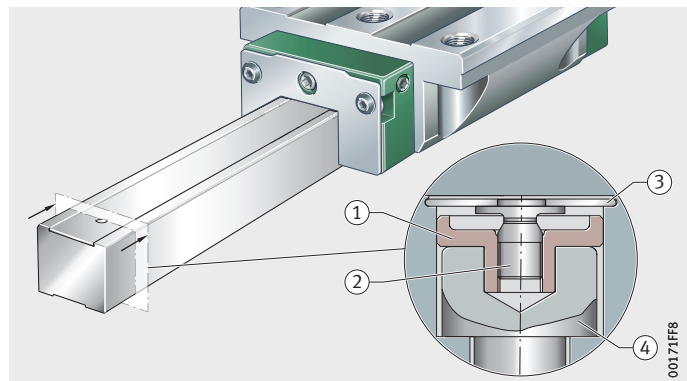
Protect the covering strip and slot against contamination during fitting. ◀

- ▶ Clean the covering strip and the slot in the guideway.  
Use a lint-free cloth.
- ▶ Insert mounting set MSATZ.ADE (retaining ring and retaining screw) into the first fixing hole in the guideway to locate the strip and press into place on the head of the fixing screw.  
Hole patterns: *Figure 4, page 4*
- ▶ Push the covering strip into the guideway slot. Note the strip side. The strip perforation must be on the same side as the mounting set MSATZ.ADE.
- ▶ If necessary, slide the covering strip through underneath the carriage.
- ▶ Align covering strip ADE axially, sliding and centring the strip perforation over mounting set MSATZ.ADE.
- ▶ Fix the covering strip by unscrewing the retaining screw with an Allen key (anticlockwise). Tightening torque  $\leq 0,5 \text{ Nm}$ .
- ▷ The covering strip is fixed. It may curve slightly upwards.

- ① Retaining ring
- ② Retaining screw, unscrewed
- ③ Covering strip ADE
- ④ Fixing screw in the guideway

*Figure 6*  
Fixed covering strip

### Fitting the carriage

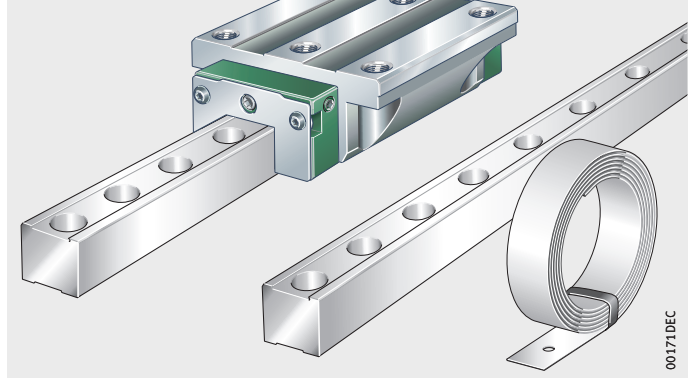


Where necessary, remount the carriages that have been previously removed from the guideway in accordance with the separate fitting manuals.



## Multi-piece guideway

In the case of the multi-piece guideway, the covering strip ADE is delivered in the packaging, together with the guideway, in the form of a coil.



*Figure 7*  
Delivery of a multi-piece guideway

### NOTICE

If carriages are included in the scope of delivery, they will be located on the guideway in the delivered condition.

Carriages do not have to be removed from the guideway in order to fit the covering strip. <

- Align and locate the guideways in accordance with separate fitting manual.
- ▷ Guideway is aligned.

## Covering strip ADE

### Fitting the covering strip

Slide the covering strip onto the guideway and fix in place in accordance with the following steps.

#### **⚠ CAUTION**

Risk of injury from the covering strip springing open when the coil retainer is released.

Open the coil retainer carefully. <

- ▶ Remove the covering strip from the packaging and open the retainer.

#### **NOTICE**

Protect the covering strip and slot against contamination during fitting. <

- ▶ Clean the covering strip and the slot in the guideway. Use a lint-free cloth.
- ▶ Insert mounting set MSATZ.ADE (retaining ring and retaining screw) into the first fixing hole in the guideway to locate the strip and press into place on the head of the fixing screw.  
Hole patterns: *Figure 4, page 4*
- ▶ Push the covering strip into the guideway slot. Note the strip side. The strip perforation must be on the same side as the mounting set MSATZ.ADE.
- ▶ If necessary, slide the covering strip through underneath the carriage.
- ▶ Align covering strip ADE axially, sliding and centring the strip perforation over mounting set MSATZ.ADE.

#### **⚠ CAUTION**

Risk of injury from protruding covering strip.

Adjust the covering strip to the length of the guideways immediately after alignment. <

- ▶ Mark the correct length of the covering strip (opposite side to strip perforation). Shorten the covering strip at the marked location using snips and realign the strip axially.
- ▶ Fix the covering strip by unscrewing the retaining screw with an Allen key (anticlockwise). Tightening torque  $\leq 0,5 \text{ Nm}$ .
- ▷ The covering strip is fixed. It may curve slightly upwards.

### Fitting the carriage

Where necessary, remount the carriages that have been previously removed from the guideway in accordance with the separate fitting manuals.

## Dismounting

Should it be necessary to remove the carriage from the guideway:

- Observe separate fitting manuals for the mounting and dismounting of carriages.
- Leave the carriage on the dummy guideway in such cases, until it is used again.

### NOTICE

Carriages do not have to be removed from the guideway in order to remove the covering strip. ◀

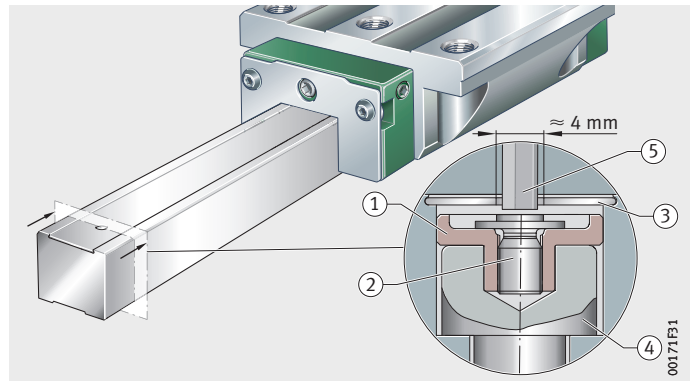
- ▶ Loosen the covering strip by screwing in the retaining screw with an Allen key (clockwise). Only turn the retaining screw until there is slight contact on the retaining ring.
- ▷ The covering strip is now axially movable and can be partially or fully extracted from the guideway. The Allen key can also be used as an aid.
- ▶ If necessary, insert the Allen key into the strip perforation (engagement diameter  $\leq 4$  mm) and use this to partially or fully extract the covering strip from the guideway.
- ▷ The covering strip is removed.

### NOTICE

If the covering strip is to be rolled up as coil for storage, the winding diameter must not be less than 150 mm. Secure the coil with plastic strip. ◀

- ① Retaining ring
- ② Retaining screw, screwed in
- ③ Covering strip ADE
- ④ Fixing screw in the guideway
- ⑤ Allen key

*Figure 8*  
Removable covering strip



## Reusing the covering strip

Before a used, removed covering strip is fitted, it should be checked for damage and functional capability and, if necessary, replaced with a new covering strip.

Observe the additional guidelines on mounting: page 5.

**Schaeffler Technologies AG & Co. KG**

Industrial Automation  
Berliner Straße 134  
66424 Homburg/Saar  
Germany  
Internet [www.schaeffler.de/en](http://www.schaeffler.de/en)  
E-mail [info.industrialautomation@schaeffler.com](mailto:info.industrialautomation@schaeffler.com)

**In Germany:**

Phone 0180 5003872  
Fax 0180 5003873

**From other countries:**

Phone +49 9132 82-0  
Fax +49 9132 82-4950

Every care has been taken to ensure the correctness of the information contained in this publication but no liability can be accepted for any errors or omissions.

We reserve the right to make technical changes.

© Schaeffler Technologies AG & Co. KG

Issued: 2020, October

This publication or parts thereof may not be reproduced without our permission.

MON 98 GB-D