



**Mounting of rolling bearings
Mounting of four-row tapered
roller bearings**

Mounting of special types

Features Selection of the suitable mounting method is based not only on the bearing type but also on the adjacent construction and the relevant dimensions. In the case of some rolling bearing types, attention must be paid during mounting to particular features or a particular procedure must be applied, which is discussed in detail below. Further details are given in the product-specific catalogues and brochures. The decisive factor for correct mounting is, however, the mounting manual relating to the application.

Mounting of four-row tapered roller bearings

Four-row tapered roller bearings are special bearings for rolling mills and comprise solid bearing rings and tapered roller and cage assemblies, *Figure 1*. These bearings are separable and are generally mounted in the chock. The chock with the bearing is then slid onto the journal. This requires either a loose cylindrical fit of the inner ring on the journal or a bearing with a tapered bore that is mounted on a tapered shaft journal.

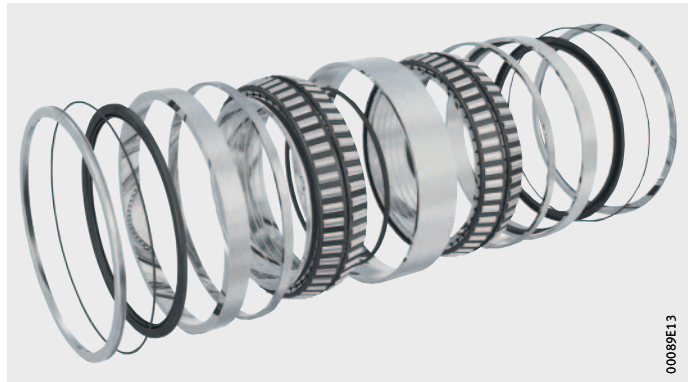


Figure 1
Four-row tapered roller bearing

Comprehensive information on the mounting and dismounting of four-row tapered rolling bearings is given in publication WL 80154, Four-Row Tapered Roller Bearings, Mounting Manual.

Further information

This PDF file is part of “medias” (medias.schaeffler.de). Please also take note of all other information provided there (Internet pages, PDF files), where this information is applicable to your task.?

**Schaeffler Technologies
AG & Co. KG**

Industriestraße 1–3
91074 Herzogenaurach
Germany
Internet www.schaeffler.de/en
E-mail info.de@schaeffler.com

In Germany:

Phone 0180 5003872

Fax 0180 5003873

From other countries:

Phone +49 9132 82-0

Fax +49 9132 82-4950

**Schaeffler Technologies
AG & Co. KG**

Georg-Schäfer-Straße 30
97421 Schweinfurt
Germany
Internet www.schaeffler.de/en
E-mail faginfo@schaeffler.com

In Germany:

Phone 0180 5003872

Fax 0180 5003873

From other countries:

Phone +49 9721 91-0

Fax +49 9721 91-3435

Every care has been taken to ensure the correctness of the information contained in this publication but no liability can be accepted for any errors or omissions. We reserve the right to make technical changes.

© Schaeffler Technologies AG & Co. KG

Issued: 2017, September

This publication or parts thereof may not be reproduced without our permission.

MH 1 GB-D