

**SCHAEFFLER**

We pioneer motion

Schaeffler India

Delivering Global Standard of Excellence



# The Schaeffler Group - At a Glance

Schaeffler is the leading global supplier to the automotive and industrial sectors. We have been driving forward groundbreaking inventions and developments in the fields of motion and mobility for over 70 years. With innovative technologies, products, and services for CO<sub>2</sub>-efficient drives, electric mobility, Industry 4.0, digitalization, and renewable energies, we are a reliable partner for making motion and mobility more efficient, intelligent, and sustainable.

The Group has operations in 200 locations worldwide, with 75 production facilities in 23 countries, 20 R&D centers and a workforce of 83,300 employees. Renowned for its proven track record in launching innovative products, the Group has been granted over 26,000 patent registrations so far. Schaeffler AG, the Group's flagship company, is a publicly listed stock corporation incorporated under the German law, with its registered office in Herzogenaurach. The Group owns majority stake in Schaeffler India.



## Divisions & Services

### Automotive Technologies

Groundbreaking products for vehicles with drive trains based on internal combustion engines as well as for hybrid and electric vehicles.

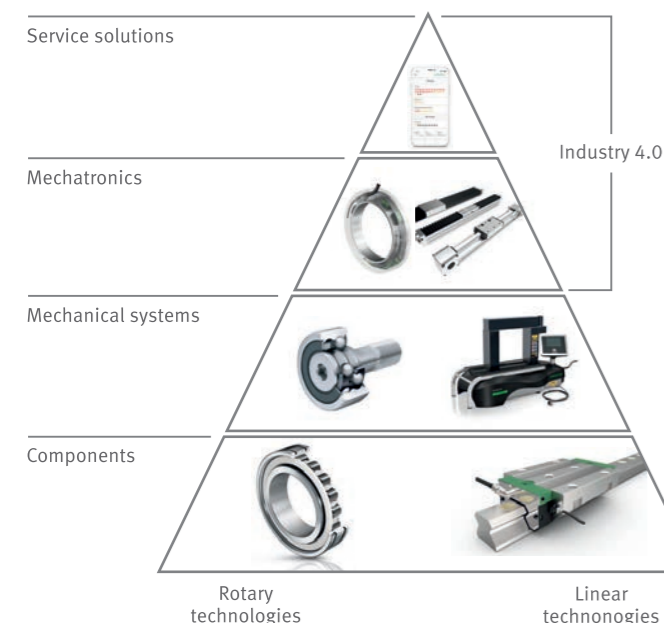
### Automotive Aftermarket

The Automotive Aftermarket division is responsible for the global spare parts business and delivers innovative repair solutions in original-equipment quality.

### Industry

Rolling and plain bearings, linear and direct drive technology, and a range of services including maintenance products and monitoring systems.

# Industrial business - Precise. Reliable. Connected



Schaeffler's Industrial division develops and manufactures components and systems for rotary and linear motion and offers services for various industrial sectors. Spread across eight key sectors, the business is backed by a wide network of competent distributors, the business is the preferred technology partner for a wide array of customers across the region.

The industrial division's product portfolio includes rolling and plain bearing solutions, linear technology, maintenance products, monitoring systems and direct drive technology. Bearing solutions cover a wide range from high-speed and high-precision bearings with small diameters to large bearings, several meters wide. Bearing applications include drive technology, production machinery and wind turbines, as well as process industry.

# Advantage India: Over five decades of excellence

From design and engineering to manufacturing and service – Schaeffler India represents the global benchmark of excellence. We have been present in India for over 50 years and Schaeffler's three major product brands - FAG, INA and LuK - are well represented in India. With four plants and 8 sales offices, we have a significant presence in India.

The two plants situated in Gujarat, in Maneja and Savli respectively are dedicated to industrial products. Schaeffler India manufactures a diversified mix of bearings for the industrial sectors at these two state-of-the-art facilities. Both these plants follow processes that are in line with the global standard to ensure high quality world-class products for the industrial segments.

Adhering to highest quality standards, Maneja & Savli plants are certified, ISO 9001, ISO 14001 TS 16949 and OHSAS 18001

## Innovation in our DNA

At Schaeffler India, we celebrate a strong culture of innovation. In India, we bring relevant innovative products of the Group and customise them to meet the needs of our clients.

Our innovation spectrum caters to all key business segments, leveraging on best-in-class technology and enables the industry to progress forward. Our India-based R&D and incubator centres help us build local competencies and gain market share in the Indian market.

## Key industries served by industrial division



Railways



Ind. Automation



Off-Road



Power Transmission



Wind energy



Two Wheelers



Raw Materials



Industrial Distribution

Our commitment to quality & precision makes us a preferred partner of choice for customers



# Global Excellence, Engineered in India



By leveraging the expertise and application knowledge of the global Schaeffler network, our Maneja and Savli plants are providing quality products for customers worldwide.

A wide range of bearings manufactured in India today are supplied to customers from various segments and markets across Europe, North America and Asia Pacific regions.

## Maneja Plant

Our key Maneja facility was established in 1962, in Gujarat, western region of India and was renamed to 'Schaeffler India Limited' on 7 July, 2017. Spread across an estimated 99,000 m<sup>2</sup>, this plant has a built up area of 36,000 m<sup>2</sup> consisting of production and service areas.

**Product range:** Deep Groove Ball Bearings, Cylindrical Roller Bearings, Spherical Roller Bearings, Tapered Roller Bearings & TAROL Bearings.

**QMS Certifications:** ISO 9001:2015, IATF 16949 (First Edition 2016-10-01); IRIS Certification rules: 2017; AAR M1003, AAR M934 and based on ISO/TS 22163:2017; Quality Assurance Program by Association of American Railroads)

**EnEHS Certification:** ISO 14001: 2015, ISO 50001:2011: ISO 18001:2007



## Savli Plant

Our Savli unit, also located in Gujarat, began operations in 2012, occupying 130,000 m<sup>2</sup>, with a built up area of 25,000 m<sup>2</sup>.

This plant also carries out in-house quality related work, such as heat treatment, precision grinding and honing, with high-tech automated assembly production lines.

**Product range:** Generation C Deep Groove Ball Bearings and Large Size Bearings

**Certifications:** ISO 9001:2015, IATF 16949 (First Edition 2016-10-01); ISO 14001:2015 (Environment Management System); ISO 45001:2018 (occupational health and safety (OH&S) management system); ISO 50001:2011 (Energy Management System); EMAS - III (Eco Management Auditing System)



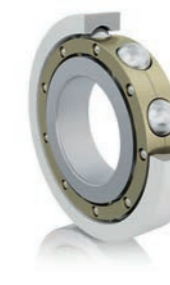
# Product Range



Generation C Deep Groove Ball Bearing



Standard Deep Groove Ball Bearing



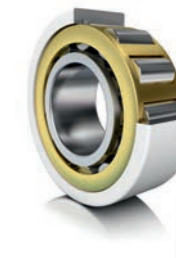
Deep Groove Ball Bearing with Ceramic Coating (J20AA)



Cylindrical Roller Bearing with Polyamide Cage



Cylindrical Roller Bearing with Brass Cage



Cylindrical Roller Bearing with Ceramics Coating



Double Row Cylindrical Roller Bearing



Cylindrical Roller Bearing without Cage



Spherical Roller Bearing with Brass Cage



Spherical Roller Bearing with Steel cage



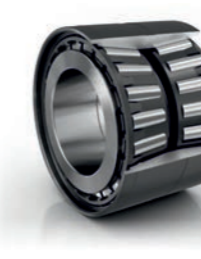
Double Row Tapered Roller Bearing



Single Row Tapered Roller Bearing



Tapered Roller Bearing with Black Oxide Coating



Tarol - Rail Wheelset Bearing



Tarol - Rail Wheelset Bearing

# Durable solutions, for the most demanding conditions

Whether it is a steel mill or a conveyor in a cement plant or mining site, our bearings are constantly enabling motion. By leveraging the expertise and application knowledge of the global Schaeffler network and gaining experience from our markets, our Maneja and Savli plants are manufacturing the best in class solution for demanding applications.

Schaeffler also has a comprehensive product range of linear guidance system solutions. In Schaeffler India, we have our quick centre facility that offers customized products according to customer's requirements, at ready-to-fit speed.

## Applications:

Industrial fans | Conveyors | Gear boxes | Screw compressors | Grinding rolls | Continuous castors | Pulley systems | E-motors

## Segments:

Wind | Rail | Power Transmission | Off-road | Industrial Automation | Raw Materials | Two-wheelers



# Quality that Redefines Benchmarks

## Integrated for a better future

Quality assurance is paramount at Schaeffler. It is directly integrated into the manufacturing process and supported by regular checks and audits. In addition, we have defined worldwide standards for occupational safety and environmentally-friendly manufacturing.

Stringent quality checks at various assembly points ensure the highest standard of quality consistency across all products. While our in-house special machine and tool manufacturing department develops solutions that are specially adapted to the needs of our production, thus providing us manufacturing flexibility and cost efficiency.

## Enhanced protection against counterfeits

Like many other high-quality brands, Schaeffler bearings are unfortunately copied and illegally sold on the market by counterfeiters. To guard against this, Schaeffler has created the 'OriginCheck' app, using a unique data matrix code (DMC) on the packaging and on our bearings. This app provides enhanced protection against counterfeit bearings, through authenticity check directly in the app.

## CERTIFICATIONS



ISO 9001:2015



IATF 16949  
First Edition 2016-10-01



IRIS Certification™ rules:2017  
and based on ISO/TS 22163:2017



Association Of American Railroads  
AAR M1003 and AAR M934  
Quality Assurance Program  
Certification



ISO 14001:2015  
(Environment Management System)



ISO 45001:2018  
(Occupational Health and Safety  
(OH&S) Management System)



ISO 50001:2011  
(Energy Management System)



EMAS - III  
(Eco Management Auditing System)

---

**Regional HQ**

**Schaeffler (Singapore) Pte. Ltd.**  
18 Tai Seng Street, #09-07 & 09-08  
Singapore 539775  
Tel: +65 6540 8600  
Fax: +65 6540 8668  
Email: marketing\_sg@schaeffler.com

**Australia**

**Schaeffler Australia Pty Ltd**  
Suite 3, 13B Narabang Way  
Ground Floor, Belrose, NSW2085 Australia  
Tel : +61 2 8977 1000  
Fax : +61 2 9452 4242  
Email: info.au@schaeffler.com

**India**

**Schaeffler India Limited**  
15th Floor, Amar Sadanand Tech Park  
Plot No 3, Survey 105/3 104/1, Baner  
Pune 411045 Maharashtra, India  
Tel: +91 20 68198400  
Email: info.in@schaeffler.com

**Indonesia**

**PT. Schaeffler Bearings Indonesia**  
Lippo Kuningan 19th Floor  
Unit A & F, Jl. HR. Rasuna Said Kav B-12  
Jakarta Selatan 12940, Indonesia  
Tel: +62 21 2911 0280  
Fax: +62 21 2911 0281  
Email: marketing\_id@schaeffler.com

**Japan**

**Schaeffler Japan Co.,Ltd.**  
Schaeffler R&D Center Building  
Yokohama Business Park  
134 Godo-cho, Hodogaya-ku  
Yokohama, Kanagawa 240-0005  
Japan  
Tel: +81 45 287 9001  
Fax: +81 45 287 9011  
Email: info-japan@schaeffler.com

**Malaysia**

**Schaeffler Bearings (Malaysia) Sdn Bhd**  
5-2, Wisma Fiamma  
No. 20  
Jalan 7A/62A  
Bandar Menjalara  
52200 Kuala Lumpur  
Malaysia  
Tel: +60 3 6275 0620  
Fax: +60 3 6275 6421  
Email: marketing\_my@schaeffler.com

**Philippines**

**Schaeffler Philippines Inc**  
5th Floor  
Optima Building  
221 Salcedo Street  
Legaspi Village  
1229 Makati City  
Philippines  
Tel: +63 28 718 9936  
Email: marketing\_ph@schaeffler.com

**South Korea**

**Schaeffler Korea Co., Ltd.**  
14th Floor, Kyobo Life Insurance  
Building, 1 Jongro, Jongno-gu  
Seoul 03154 South Korea  
Tel: +82 2 311 3000  
Fax: +82 505 073 2017  
Email: info.kr@schaeffler.com

**Thailand**

**Schaeffler Manufacturing (Thailand)  
Co., Ltd.**  
390/1 Moo 2  
WHA Chonburi Industrial Estate 2  
Tambon Khao Kan Song, Amphur Sri  
Chonburi, 20110  
Thailand  
Tel: +66 33079878  
marketing\_th@schaeffler.com

**Vietnam**

**Schaeffler Vietnam Co., Ltd**  
Floor 4, Deutsches Haus Building  
33 Le Duan, Ben Nghe Ward, District 1  
Ho Chi Minh City  
Vietnam  
Tel: +84 8 22 20 2777  
Fax: +84 8 22 20 2776  
Email: svcinfo@schaeffler.com