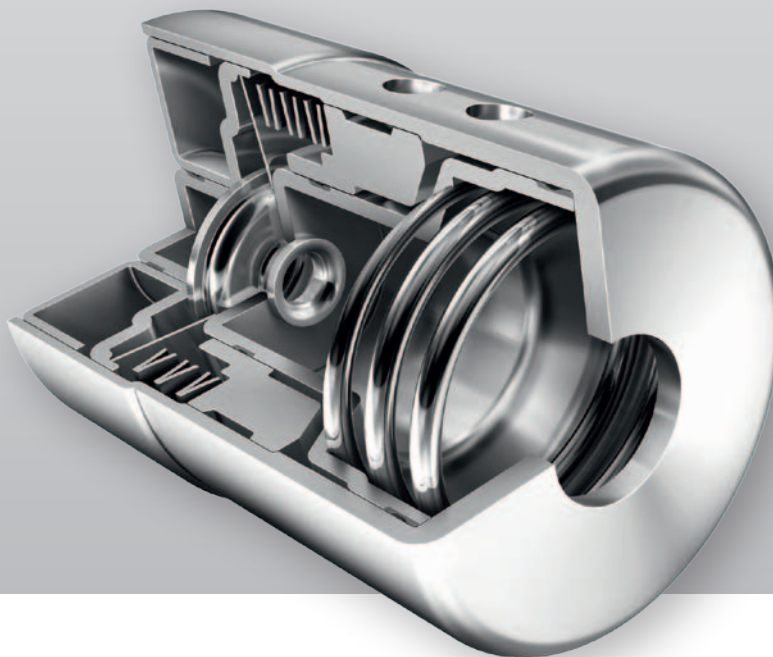


Engine
Chassis
Transmission
E-Mobility

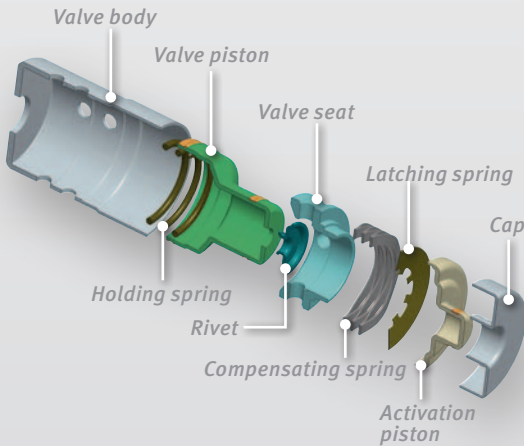
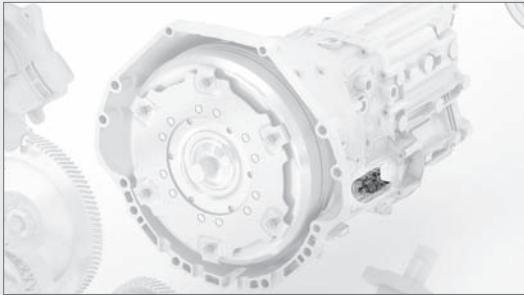
SCHAEFFLER

Latching Valve

IN THE REGION FOR THE REGION



Latching Valve for Automatic Transmissions



Description

- Switchable valve for maintaining clutch functions in automatic transmissions during engine stop-start events
- Core component of a start-stop system, which eliminates the need for a separate hydraulic pump

Functional advantages

- Minimizes transmission torque delay
- Enables vehicle to move off rapidly when engine is restarted

Product benefits

- Reduction of emissions
- Economic benefits compared to current volume production solutions

Integration/installation

- Easily integrated into an existing clutch assembly
- Can also be integrated into the transmission valve body
- Modular design allows a high degree of flexibility during assembly at the transmission plant