



**THE COMPLETE CONDITION MONITORING SERVICE
IS NOW AVAILABLE THROUGHOUT THE UK**



Forge Lane, Minworth, Sutton Coldfield,
West Midlands, B76 1AP
Tel: 0121 351 3833 Fax: 0121 351 7686
E-mail: praxis@ina-fag.com
www.ina.co.uk



CORUS NORTHERN ENGINEERING SERVICES

Business Headquarters
Steel House, Redcar, TS10 5QW
Tel.: +44 (0) 1642 405425 Fax: +44 (0) 1642 483376
E-mail: praxis@ina-fag.com
www.corusnes.com/praxis

Care has been taken to ensure that this information is accurate, but Corus Group plc including its subsidiaries, and INA FAG do not accept responsibility or liability for errors or information which is found to be misleading.



**THE COMPLETE CONDITION MONITORING SERVICE
IS NOW AVAILABLE THROUGHOUT THE UK**

A service partnership between INA FAG and Corus Northern Engineering Services





THE COMPLETE CONDITION MONITORING SERVICE IS NOW AVAILABLE THROUGHOUT THE UK

THE FULL CONDITION MONITORING SOLUTION HAS ARRIVED! THE MOST COMPREHENSIVE PACKAGE OF CONDITION MONITORING TOOLS AND TECHNIQUES FOR ANY APPLICATION IN ANY INDUSTRY IS NOW AVAILABLE FROM HIGHLY EXPERIENCED ENGINEERS.

PRAXIS is a service partnership between INA FAG and Corus Northern Engineering Services (CNES). This partnership offers plant engineers and maintenance managers a unique solution for all condition monitoring needs throughout the UK.

The full condition monitoring package from PRAXIS provides:

- Vibration analysis
- Acoustic monitoring
- Thermographic imaging
- Oil analysis
- The installation and commissioning of all condition monitoring systems
- Complete after-sales service

These are supported by FAG condition monitoring hardware and software and include vibration diagnosis

devices, both mobile and stationary, and continuous on-line monitoring systems for the optimised operation of complex plant and machinery.

CNES is a trading division of Corus plc, one of the world's largest metal producers. Developed as the complete engineering support service to steel making in Teesside, Rotherham and Scunthorpe, CNES also provide an increasing number of external customers with extensive workshop facilities covering electrical & electronic, mechanical, structural steel & fabrication, and railway & road vehicle applications, and additional services such as engineering consultancy and condition monitoring.

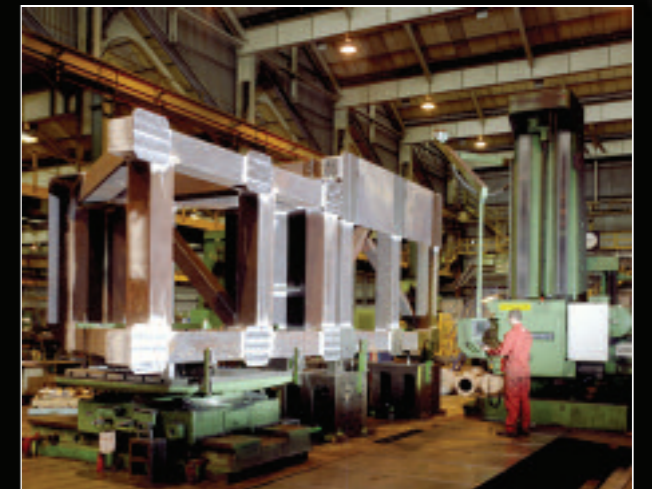
For more than a quarter of a century Corus engineers have used condition based monitoring to accurately predict its maintenance requirements and maximise steel making plant availability. CNES engineers have so far secured many

condition monitoring contracts across an increasingly wide range of industries from metal extrusion companies to food manufacturing organisations.

Precision bearing manufacturers, INA and FAG, have combined forces and now offer the most comprehensive range of both standard bearing products and customised bearing solutions in virtually any sector of industry from a single source.

INA's wide range of rotary and linear bearings is well known within the power transmission, mechanical handling and construction industries. FAG produces a wide range of bearings for heavy industries such as steel, quarrying, mining and paper. It was in support of complex bearing applications in these industries that FAG developed its portfolio of maintenance products and condition monitoring equipment under the sister company FAG Industrial Services (FIS). FIS manages all industrial services for both INA and FAG brands worldwide.

Full training on this equipment is available from PRAXIS engineers who can visit any site throughout the UK or offer tailor-made training modules on-site in its state-of-the-art facilities in Sutton Coldfield.



THE FOLLOWING CONDITION MONITORING HARDWARE AND SOFTWARE ARE AVAILABLE THROUGH PRAXIS:

DETECTOR II



The Detector II is a handheld measuring device for measuring data in the offline monitoring of production plants. It is user-friendly and very easy to operate.

BEARING ANALYSER III



This device is an efficient and reasonably priced vibration diagnosis tool for the early detection of rolling bearing damage and gear damage by means of the envelope detection method.

VIBROCHECK



This is a permanent online monitoring system where a large number of measuring points must be monitored such as in rolling mills, paper mills and power stations.

DTECT X1



This is a reliable and favourably priced online monitoring device for the detection of damage and faults in machines without requiring the presence of a diagnosis expert. DTECT X1 automatically reports changes to the operator, plant builder or service provider wherever they are in the world.

